



HEAD OFFICE

Suite 104, 189 South Centre Road,
Tullamarine, VIC, 3043

Email: reception@agedcaregp.com

Tel: 03 9338 5657

Fax: 03 8679 4480

www.agedcaregp.com



Providing exceptional, holistic and personalised General Practitioner medical care to older people living in residential aged care facilities.



Accessing the GPs

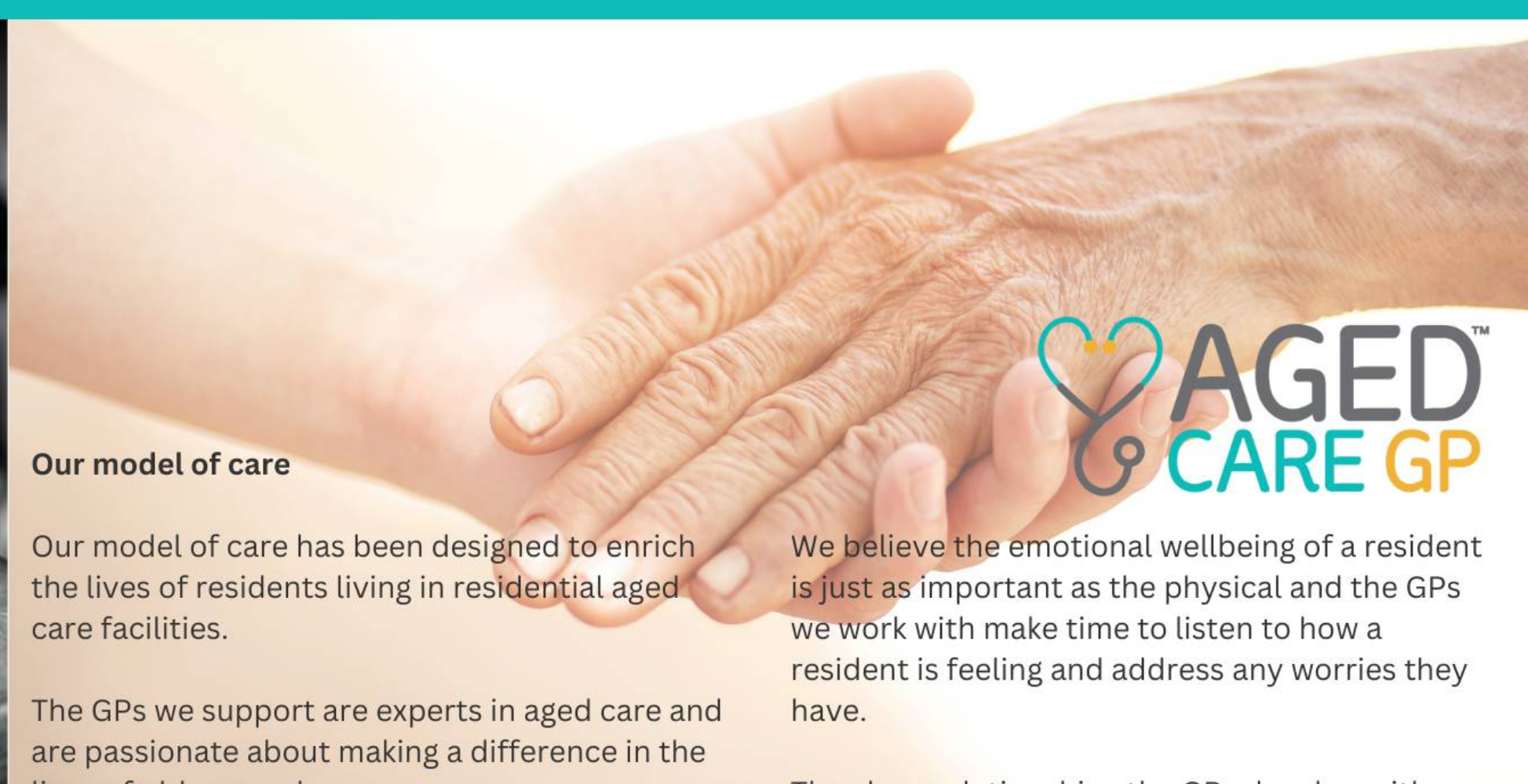
If you would like to use Aged Care GP as your regular general practice service please complete the Patient Registration and Medical Consent form on our website or ask the facility reception team for a copy.

Cost

Residents with a valid Medicare or DVA health card will be bulk billed for regular consultations.

There are out of pocket costs for non-Medicare billable paperwork.

A full list of our fees is available on our website.



Our model of care

Our model of care has been designed to enrich the lives of residents living in residential aged care facilities.

The GPs we support are experts in aged care and are passionate about making a difference in the lives of older people.

Each GP works in collaboration with aged care facilities and closely with their multidisciplinary teams. They will carry out comprehensive medical assessments, contribute to care plans and case conferences, partner with pharmacists on medication management, and ensure comprehensive handovers take place.

The GPs we work with encourage and empower residents to be involved in their care plans as much as possible. They spend time to ensure they have a thorough understanding of the resident's medical conditions and help families understand what to expect as they move through their last years of life.

Each GP has a regular visit schedule, enabling them to spend time with each resident and build relationships to ensure all their medical concerns are addressed.

We believe the emotional wellbeing of a resident is just as important as the physical and the GPs we work with make time to listen to how a resident is feeling and address any worries they have.

The close relationships the GPs develop with residents enables them to be responsive in their medical care and advice with the aim of reducing hospital visits.

The GPs dedicate time developing Advance Care Plans and will ensure the resident and family members are involved and understand what will happen.

Providing dedicated aged care service enables the GPs to provide a reliable and consistent service, high continuity of care, and to reduce stress for residents and their families.

Our model of care provides a mobile and highly accessible service and even if a GP isn't scheduled to visit, a resident or family member is always welcome to call or email us.

For out of hours and weekend GP medical care we have cover arrangements with locum services.

Moving into the last years of life can be a very stressful time

With independence declining and medical issues affecting both body and mind increasing, transitioning through the last stages of life is often overwhelming and frightening.

At Aged Care GP we believe passionately that all older people deserve access to exceptional medical care, to be seen as individuals with unique physical and emotional needs, and to be empowered to make as many decisions as possible. We believe that older people should be surrounded with respect, understanding and love, and to be given the opportunity to play an active role in their medical care.